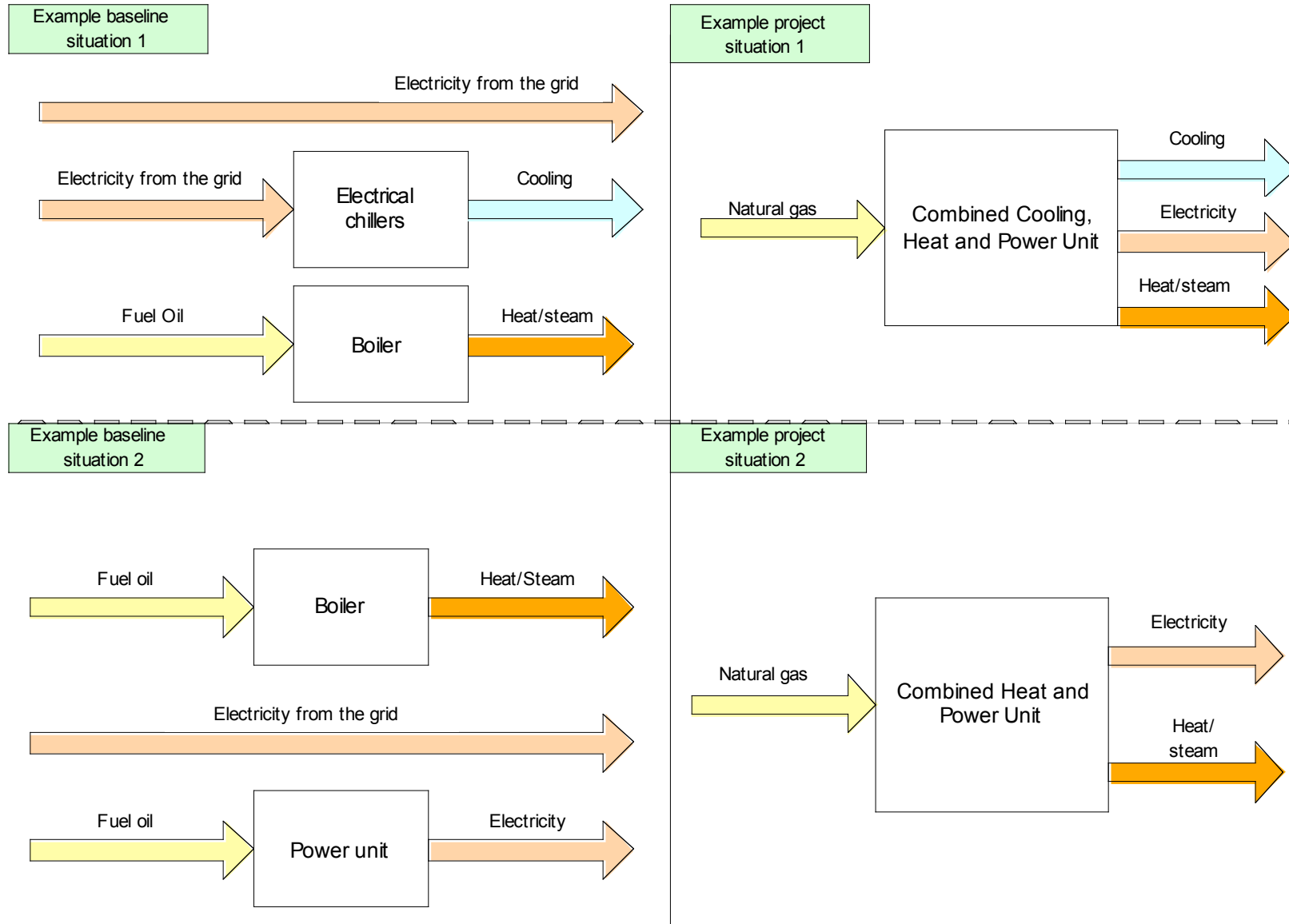


AMS II.H: Energy efficiency measures through centralization of utility provisions of an industrial facility



AMS II.H: Energy efficiency measures through centralization of utility provisions of an industrial facility

- Integration of utility provisions (e.g. steam/heat, cooling, electricity) resulting in higher efficiency, includes fuel switch to less carbon intensive fuel.
- Introduction of Combined Heat and Power unit (CHP) or Combined Cooling, Heat and Power Unit (CCHP);
- In case of CCHP, direct emissions from refrigerants addressed as per EB 34 guidance

PDD Project
case:

